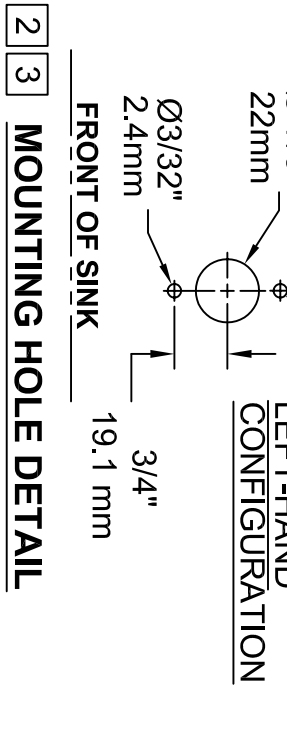


NOTES:

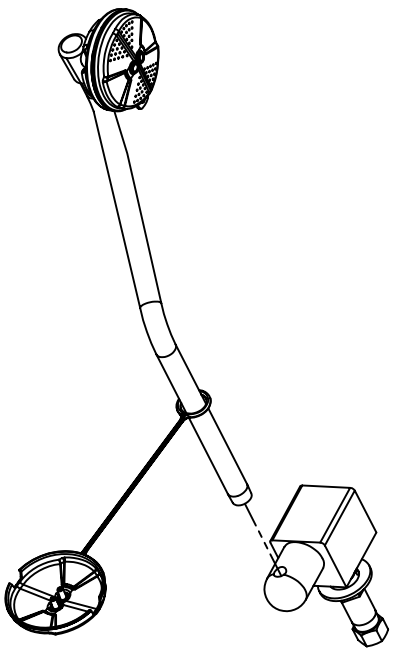
1. THE ANSI Z358.1-2009 STANDARD SPECIFIES EYEWASH NOZZLE HEIGHTS TO BE 83.8cm (33 IN.) TO 114.3cm (45 IN.), ABOVE THE FLOOR AND 15.3cm (6 IN.) MINIMUM FROM WALL OR NEAREST OBSTRUCTION.
2. INSTALL SO THAT EYEWASH HEAD IS OVER SINK WHEN ACTIVATED. EYEWASH REQUIRES 4-1/2" [114mm] OF CLEARANCE AROUND HEAD FOR FACEWASH STREAMS.
3. DRILL ONE Ø7/8" [22mm] HOLE AND ONE Ø3/32" HOLE WHERE UNIT IS TO BE INSTALLED. REFER TO MOUNTING HOLE DETAIL.
4. THESE DIMENSIONS MAY VARY ±1/2" [6.4mm].



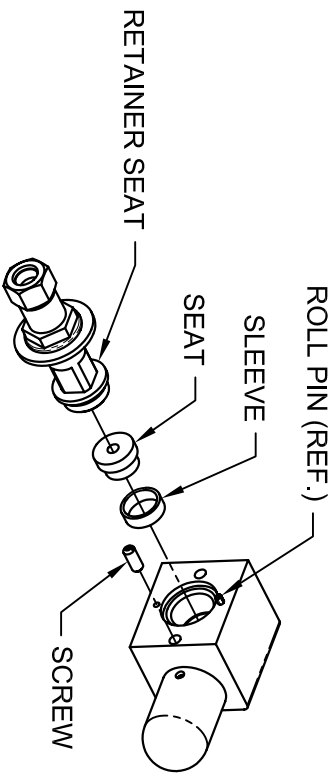
1455 KLEPPE LANE
SPARKS, NEVADA 89431
(775) 359-4712 FAX (775) 359-7424
E-MAIL: HAWS@HAWS.CO.COM
WEBSITE: WWW.HAWS.CO.COM

REVNO: 2006	DATE: 10/96	ECN: 4345	HR: 7610	MODELS: INFO FAX DOC #: 27610	DATE: 10/96	REVNO: 00000067.D	DATE: 12/69	REVNO: 10
DESIGNER: JF	DATE: 10/96	ECN: 4345	HR: 7610	MODELS: INFO FAX DOC #: 27610	DATE: 10/96	DESIGNER: JF	DATE: 12/69	REVNO: 10
DRAWING TYPE: INSTALLATION/EXHIBIT					SIZE: A SHEET: 1 OF 3			

PROCEDURE FOR LEFT-HAND CONVERSION

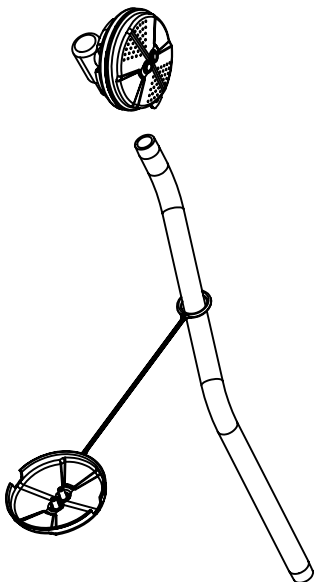


STEP 1:
 (SHOWN IN CLOSED POSITION)
 REMOVE BEND FROM BODY. HAWS RECOMMENDS THE USE OF A SOFT TOOTH VICE TO PREVENT MARKINGS ON CHROME PLATED PARTS THROUGHOUT ENTIRE PROCEDURE.

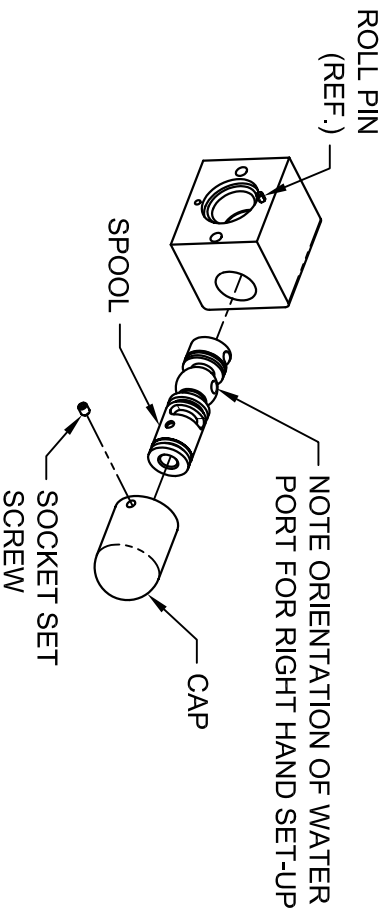


STEP 3:
 REMOVE RETAINER SEAT, SLEEVE AND SEAT FROM BODY. REMOVE SCREW.

EYEWASH ASSEMBLY



STEP 2:
 REMOVE EYEWASH ASSEMBLY FROM BEND.

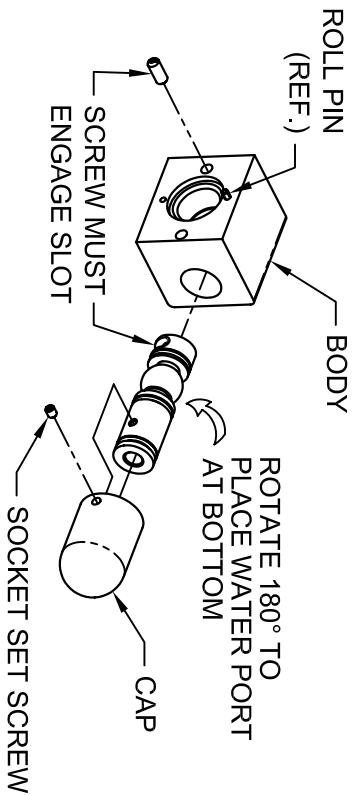


STEP 4:
 LOOSEN AND BACK OFF SOCKET SET SCREW WITH 3/32" HEX WRENCH. REMOVE CAP AND SPOOL. NOTE EXISTING ORIENTATION WATER PORT IN R.H. CLOSED POSITION.

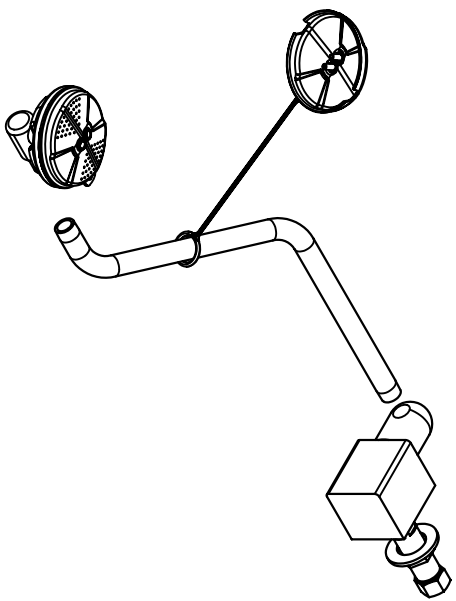


1455 KLEPPE LANE
 SPARKS, NEVADA 89431
 (775) 359-4712 FAX (775) 359-7424
 E-MAIL: HAWS@HAWS.CO.COM
 WEBSITE: WWW.HAWS.CO.COM

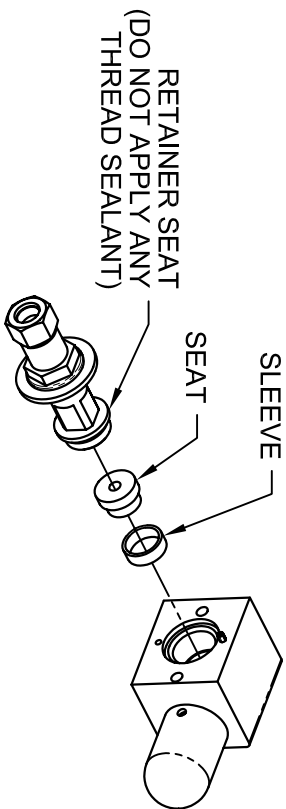
FORM NO. 3906	REVISIONS	DATE	BY	DESCRIPTION
7610	1	5/10/07	JF	REVISED TO ACCOMMODATE NEW EYEWASH ASSEMBLY
MODEL(S): 7610 INFO FAX DOC #: 27610 SCALE: 1:1 DRAWING TYPE: INSTALLATION/PACKAGE				
DATE: 5/10/07	APPROVED:	DATE: 5/10/07	BY: JF	DESCRIPTION: 12691A00
SIZE: A	SHEET: 2	OF: 3	QTY: 100 ORDER NO: 12691A00	



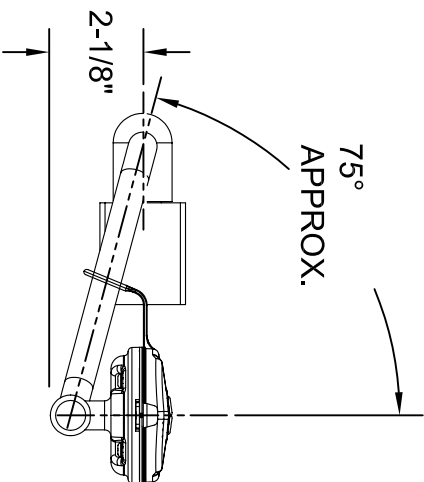
STEP 5:
 ROTATE SPOOL 180°, INSERT INTO BODY. INSERT SCREW AT LEFT SIDE OF BODY, SCREW MUST ENGAGE SLOT ON SPOOL. ATTACH CAP, SECURE WITH SOCKET SET SCREW. (THIS IS NOW IN L.H. CLOSED POSITION).



STEP 7:
 ATTACH BEND TO BODY, THEN HEAD ASSEMBLY TO BEND, SEE STEP 8 FOR ORIENTATION OF BEND. USE LOCITITE #565 THREAD SEALANT ON MALE THREADS OF BEND (EACH END).

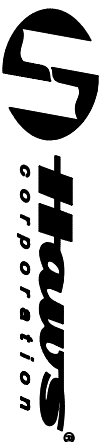


STEP 6:
 INSERT SLEEVE, SEAT AND SCREW RETAINER SEAT TIGHTLY.



STEP 8:
 NOTE PROPER ORIENTATION OF BEND; 2-1/8" FROM CENTER OF BODY TO CENTER OF EYEWASH TEE. THE 75° IS FOR REFERENCE ONLY.

UPON COMPLETION CHECK FOR PROPER DIRECTION OF ACTIVATION AND FOR LEAKS.



1455 KLEPPE LANE
 SPARKS, NEVADA 89431
 (775) 359-4712 FAX (775) 359-7424
 E-MAIL: HAWS@HAWSCCO.COM
 WEBSITE: WWW.HAWSCCO.COM

FORM NO. 2068	REVISION: ECK-4897	DATE: 5/10/7	MODEL(S): 7610	INFO FAX DOC #: 27610	SCALE: 1/2"	PREPARED BY: INSTALATION/FAKAR	DATE: 10/20/06	REV: 10
APPROVED: JF	DATE: 5/10/7	DATE: 5/10/7	DATE: 5/10/7	DATE: 5/10/7	DATE: 5/10/7	DATE: 5/10/7	DATE: 5/10/7	DATE: 5/10/7
							SIZE: A	SHEET: 3 OF 3