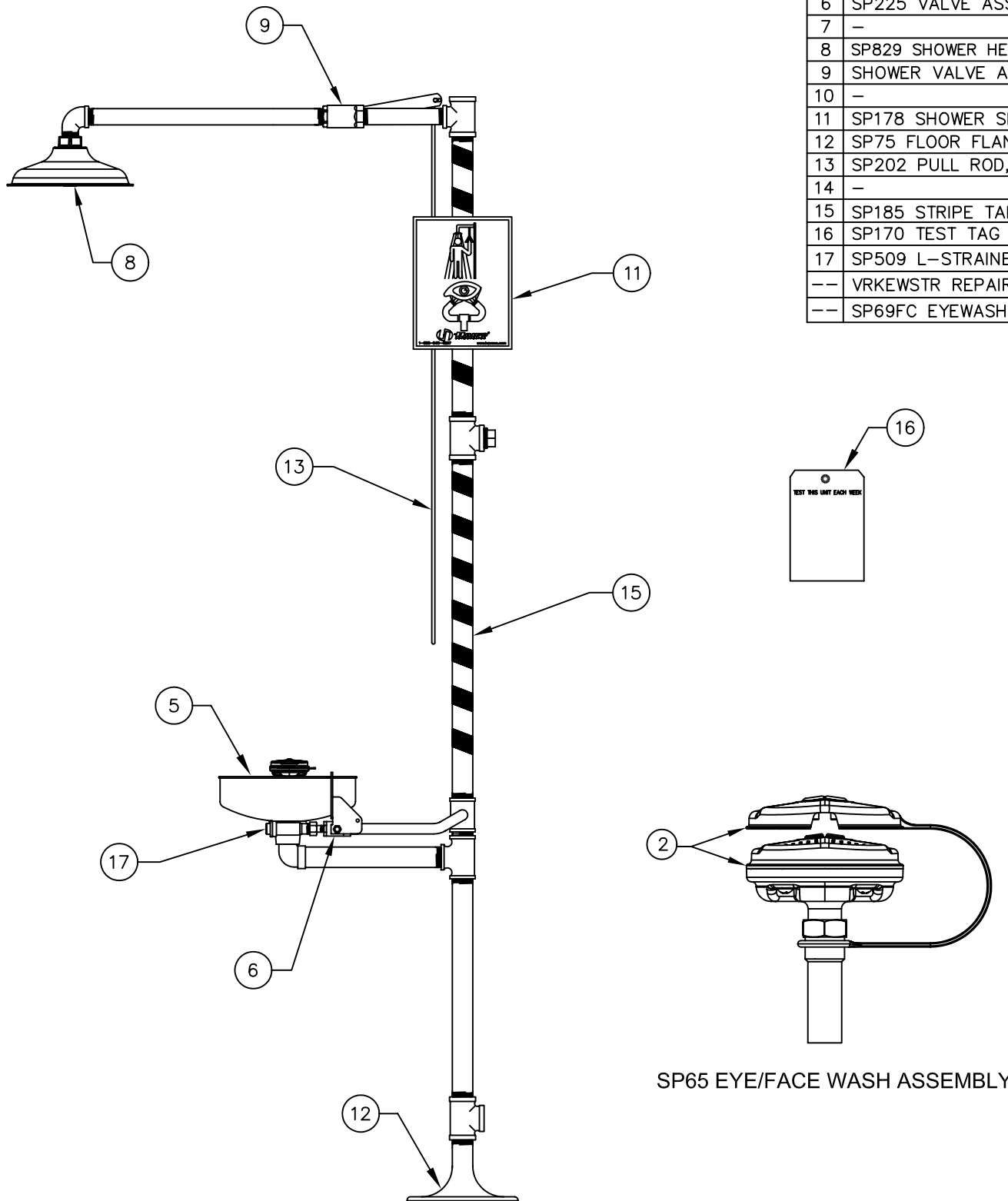


PARTS BREAKDOWN


ITEM	DESCRIPTION
1	-
2	SP65 EYE/FACE WASH ASSY
3	-
4	-
5	SP90 BOWL
6	SP225 VALVE ASSEMBLY
7	-
8	SP829 SHOWER HEAD
9	SHOWER VALVE ASSEMBLY
10	-
11	SP178 SHOWER SIGN
12	SP75 FLOOR FLANGE
13	SP202 PULL ROD, 44"
14	-
15	SP185 STRIPE TAPE
16	SP170 TEST TAG
17	SP509 L-STRAINER
--	VRKEWSTR REPAIR KIT
--	SP69FC EYEWASH ASSEMBLY



SP65 EYE/FACE WASH ASSEMBLY

REV	DESCRIPTION	ECN	DATE	BY/APVD
17	UPDATED PER ECN	4267	5/12/09	IR
REVISIONS				

WHEN ORDERING PARTS PLEASE SPECIFY YOUR MODEL NUMBER

		1455 KLEPPE LANE SPARKS, NEVADA 89431 (775) 359-4712 FAX (775) 359-7424 E-MAIL: HAWS@HAWS.CO.COM WEBSITE: WWW.HAWS.CO.COM			
		DRAWN BY: D.O.	DATE: 07/30/96	CHECK BY:	APPVD BY:
TITLE: BARRIER FREE SHOWER AND EYE/FACE WASH 8309WC			PART NUMBER: 0002067461		
DRAWING TYPE: PARTS BREAKDOWN			DRAWING NUMBER: 12553C00		
				REV. 17	