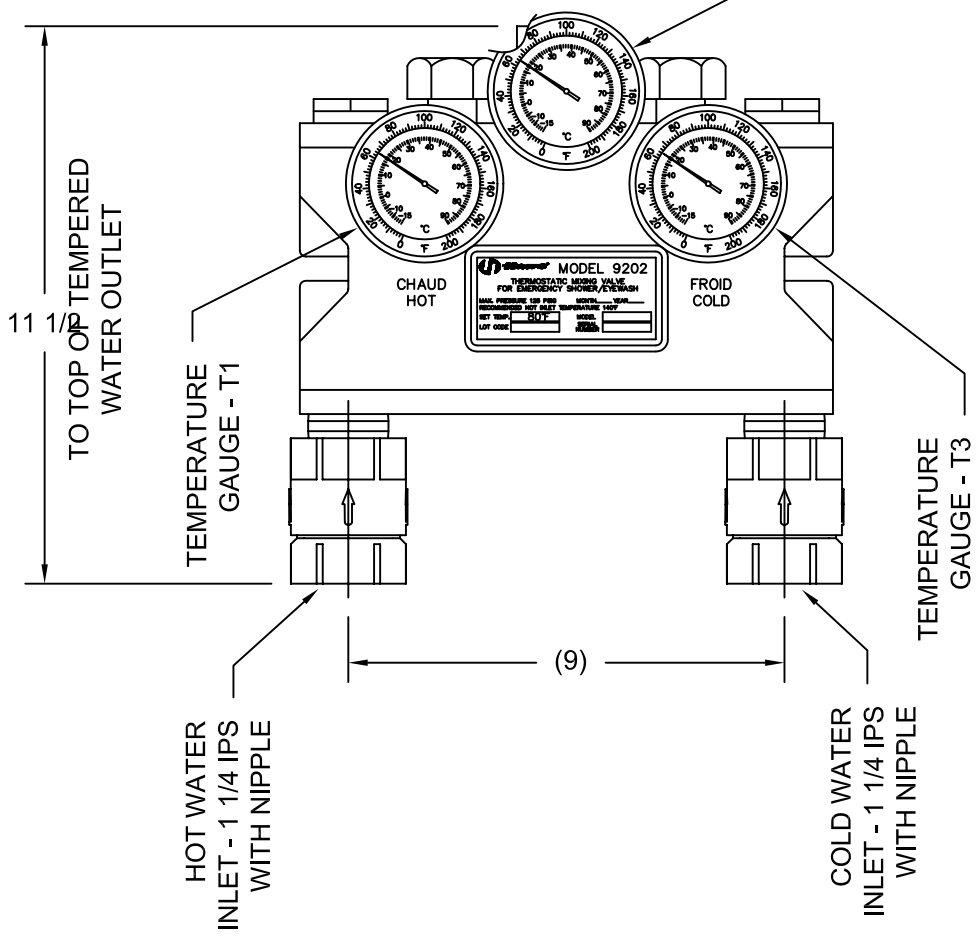
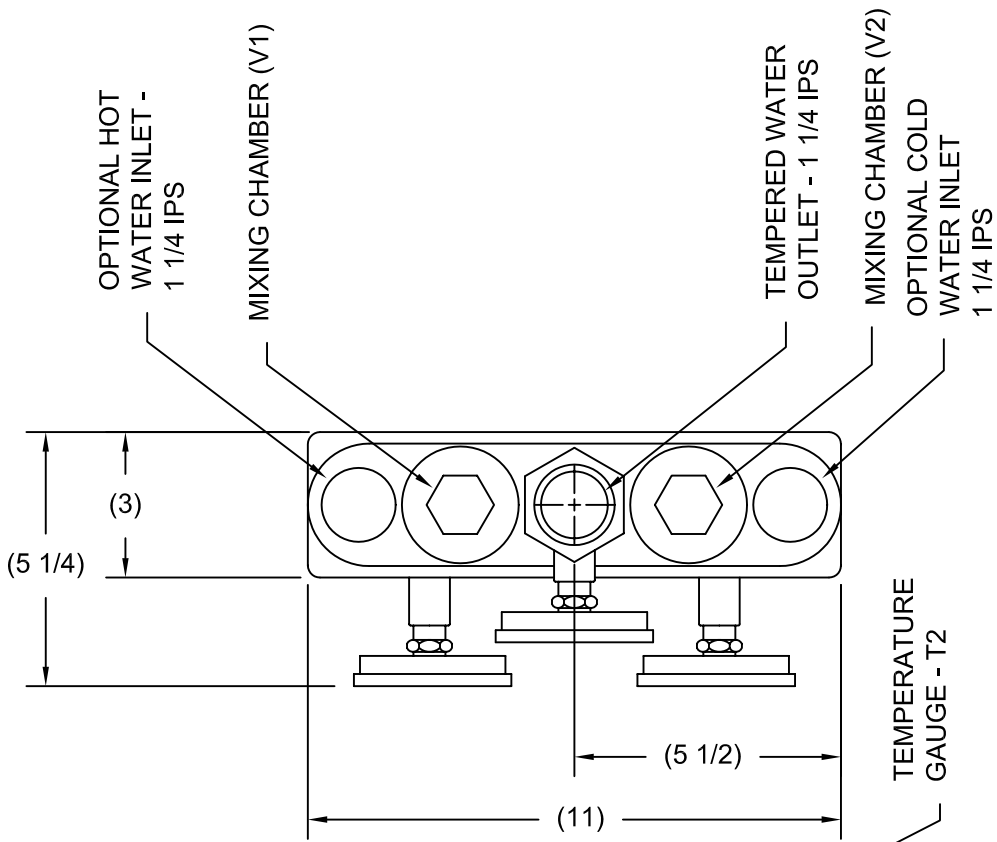


THIS DOCUMENT IS TRUE AND CORRECT AT TIME OF PUBLICATION. CONTINUED PRODUCT IMPROVEMENTS MAKE SPECIFICATIONS AND MEASUREMENTS SUBJECT TO CHANGE WITHOUT NOTICE.



INFO FAX: 1-888-FAX-HAWS (1-888-329-4297)
 1455 Kleppe Ln, Sparks NV, 89431
 Phone: 775-359-4712 Fax: 775-359-7424
 Haws Ag Bachweg 3 CH-3401 Burgdorf Switzerland
 Haws Mfg Pte Ltd 74 Sunget Kadut Loop Singapore 729531
 e-mail: Haws@hawsco.com website: www.hawsco.com

Haws Corporation

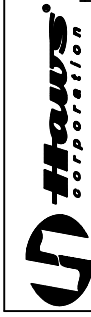
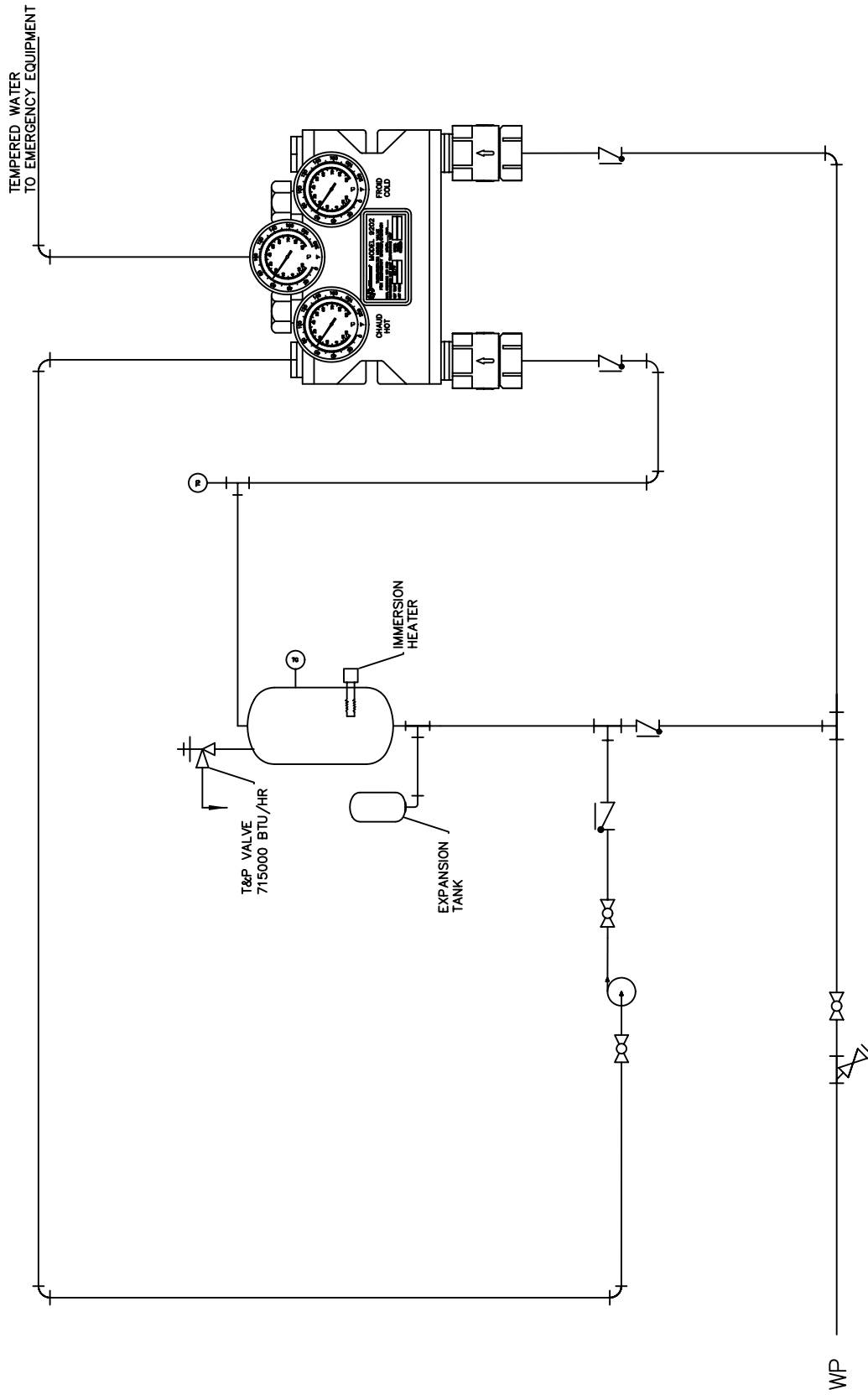
ECR NO.:	REVISED PER:	BY:	DATE:
	ECN: 3594	VMC	
P. N.:	DATE:	DATE:	
	04/99		
APPROVED:			

MODEL(S): 9202 MIXING VALVE
 INFO FAX DOC #: 29202
 SCALE: NA DRAWING TYPE: INSTALLATION/FABRACK

REV.:	REV.:
14097A00	5
DRAWING NUMBER:	REV.:
0002080229.D	1 OF 2
PART NUMBER:	SIZE: A
	SHT.:

©2006 Haws Corporation - All Rights Reserved HAWS® and other trademarks used in these materials are the exclusive property of Haws Corporation.

THIS DOCUMENT IS TRUE AND CORRECT AT TIME OF PUBLICATION. CONTINUED PRODUCT IMPROVEMENTS MAKE SPECIFICATIONS AND MEASUREMENTS SUBJECT TO CHANGE WITHOUT NOTICE.



INFO FAX : 1-888-FAX-HAWS (1-888-329-4297)
 1455 Kleppe Ln, Sparks NV, 89431
 Phone: 775-359-4712 Fax: 775-359-7424
 Haws Ag, Bachweg 3, CH-3401 Burgdorf, Switzerland
 Haws Mfg Pte Ltd 74 Sungai Kadut Loop Singapore 729531
 e-mail: Haws@hawsco.com website: www.hawsco.com

EQP. NO.	REVISED PER	DATE	BY	DATE	BY
	ECN: 3994	04/99			
MODEL(S):	9202 MIXING VALVE				
INFO. FAX. DOC. #:	29202				
SCALE:	1" = 1'				
DRAWING NUMBER:	14097A00				
SIZE:	A				
SHEET:	2 OF 2				