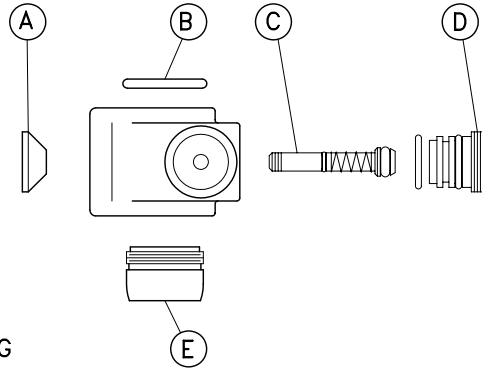


## PARTS LISTING G1100/G1101/G1102

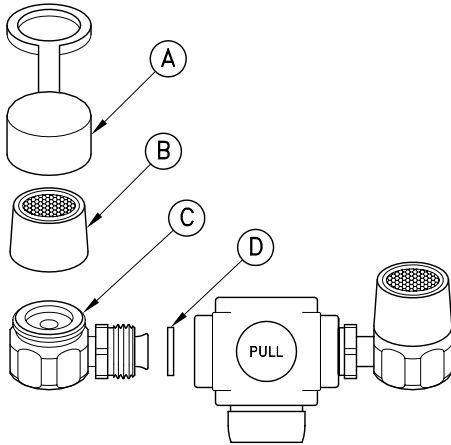
### VALVE COMPONENTS

- A 600-664R ACTUATING KNOB (PKG. OF 2)
- B 600-628R INLET O-RING (PKG. OF 2)
- C AP600-666 VALVE STEM WITH O-RINGS AND SPRING
- D AP600-665 DIVERTER WITH O-RINGS
- E 450-005 AERATOR ASSEMBLY



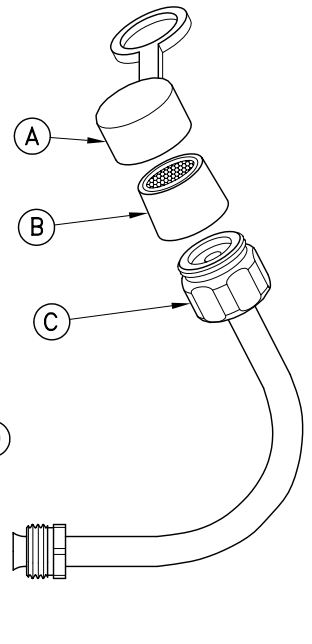
### INLET ADAPTERS

- AP400-009 (1) 15/16-27 MALE ADAPTER WITH O-RING,  
(1) 13/16-27 MALE ADAPTER WITH O-RING,  
(1) 3/8" IPS MALE ADAPTER WITH O-RING
- AP400-012 (1) 13/16-24 FEMALE ADAPTER WITH O-RING
- AP400-015 (1) 3/4" FEMALE HOSE ADAPTER WITH O-RING



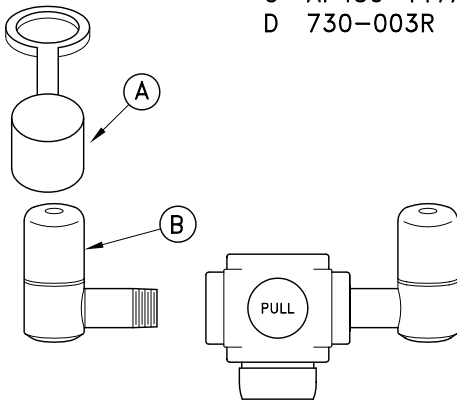
### G1100

- A 250-046R DUST COVER WITH STRAP (PKG. OF 2)
- B AP450-110R AERATOR ASSEMBLY (PKG. OF 2)
- C AP450-117 OUTLET ARM ASSEMBLY
- D 730-003R NYLON WASHER (PKG. OF 2)



### G1101

- A 250-046R DUST COVER WITH STRAP (PKG. OF 2)
- B AP450-110R AERATOR ASSEMBLY (PKG. OF 2)
- C AP450-117A OUTLET ARM ASSEMBLY
- D 730-003R NYLON WASHER (PKG. OF 2)



### G1102

- A 250-047R DUST COVER WITH STRAP (PKG. OF 2)
- B AP450-121R OUTLET ARM ASSEMBLY (PKG. OF 2)

UNITS (EXCEPT THOSE WITH SELF-CLOSING VALVES) COMPLY WITH THE REQUIREMENTS OF ANSI Z358.1.

TEST ALL EMERGENCY EQUIPMENT AT LEAST WEEKLY.

# EYE SAFE FAUCET MOUNTED EYE WASH INSTRUCTIONS

## A. Installation

1. Remove present aerator or other fitting from faucet outlet.
2. Mount the Eye Safe unit to faucet spout. The Eye Safe inlet has a 55/64"-27 female thread.

Note: Due to the variety of faucets, it may be necessary to use an adapter to mount the Eye Safe unit on the faucet spout. Three adapters are furnished with the unit; a larger adapter with 15/16"-27 thread size to fit Delta and American Standard faucets, a smaller adapter with 13/16"-27 thread size to fit Kohler and other faucets, and a 3/8" NPS adapter to fit Water Saver faucets.

IMPORTANT: WHEN MOUNTING EYE SAFE TO FAUCET, BE CAREFUL NOT TO OVERTIGHTEN ADAPTER.

3. If necessary, use a 13/16" or adjustable wrench to adjust the angle of the outlet heads to obtain the desired angle for the eye wash water flow.
4. Attach the enclosed sign to wall or backsplash behind sink.

## B. Use

1. Turn on cold water side of faucet.

IMPORTANT: USE ONLY COLD WATER WHEN EYE SAFE UNIT IS IN OPERATION. HOT WATER MAY CAUSE SCALDING OR OTHER INJURY.

2. Pull knob on Eye Safe unit forward to activate the eye wash. Water pressure will hold the eye wash in operation, thus leaving the user's hands free.
3. To return to normal faucet operation, push knob back to original position. When the faucet is turned off, the knob will return to original position automatically.

## C. Maintenance

1. Periodic cleaning of the eye wash aerators is advisable to assure proper water flow.
2. Keep plastic float-off covers on outlet heads when the unit is not in use.
3. The Eye Safe unit, like all emergency eye wash and shower equipment, should be tested weekly.