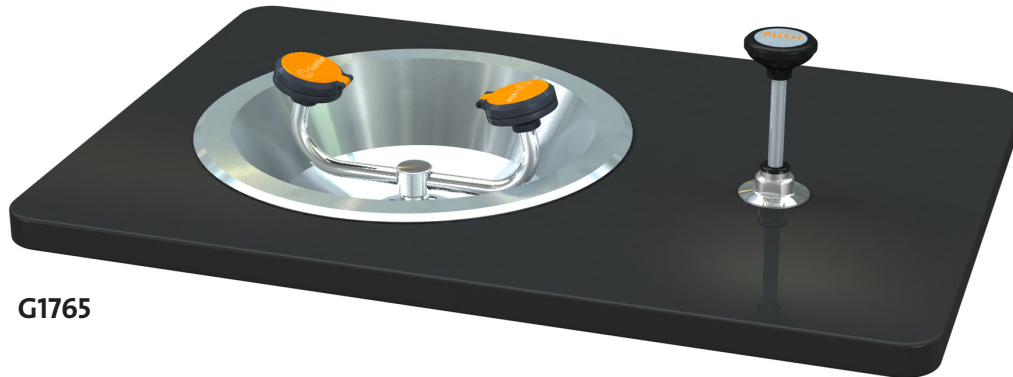
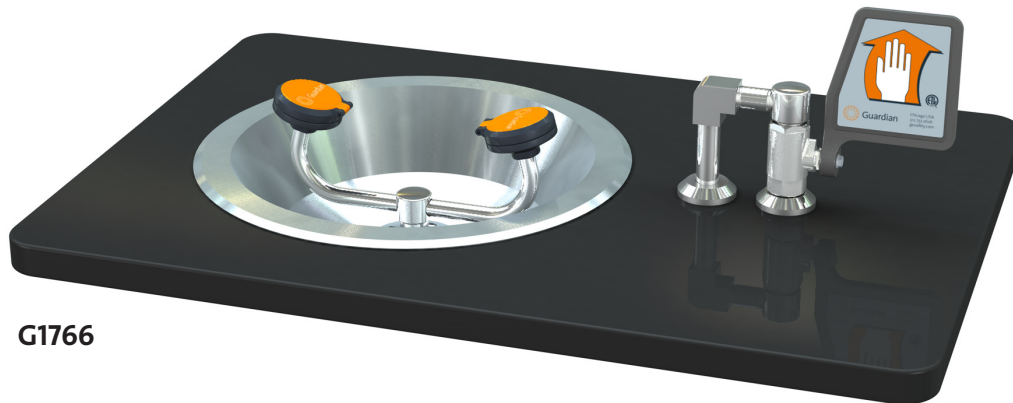




- G1765** Eye/Face Wash, Recess Deck Mounted, Push-Down Valve
- G1766** Eye/Face Wash, Recess Deck Mounted, Ball Valve with Flag Handle



**G1765**



**G1766**

**APPLICATION:** Eye/face wash for recessed mounting in countertop. Two large FS-Plus™ spray-type outlet heads deliver a flood of water for rinsing eyes and face.

**SPRAY HEAD ASSEMBLY:** Two FS-Plus™ spray heads. Each head has a “flip top” dust cover, internal flow control and filter to remove impurities from the water flow.

**VALVE:** 1/2" IPS brass stay-open ball valve. G1765 has valve mounted below counter and activated by push-down knob. G1766 has valve mounted above counter and activated by flag handle.

**BOWL:** 13" diameter flanged stainless steel bowl for recessed mounting in countertop. Furnished with all hardware necessary for installation in counter.

**VALVE SUPPLY:** 1/2" NPT male inlet.

**WASTE:** 1 1/4" NPT female outlet.

**SIGN:** ANSI-compliant identification sign.

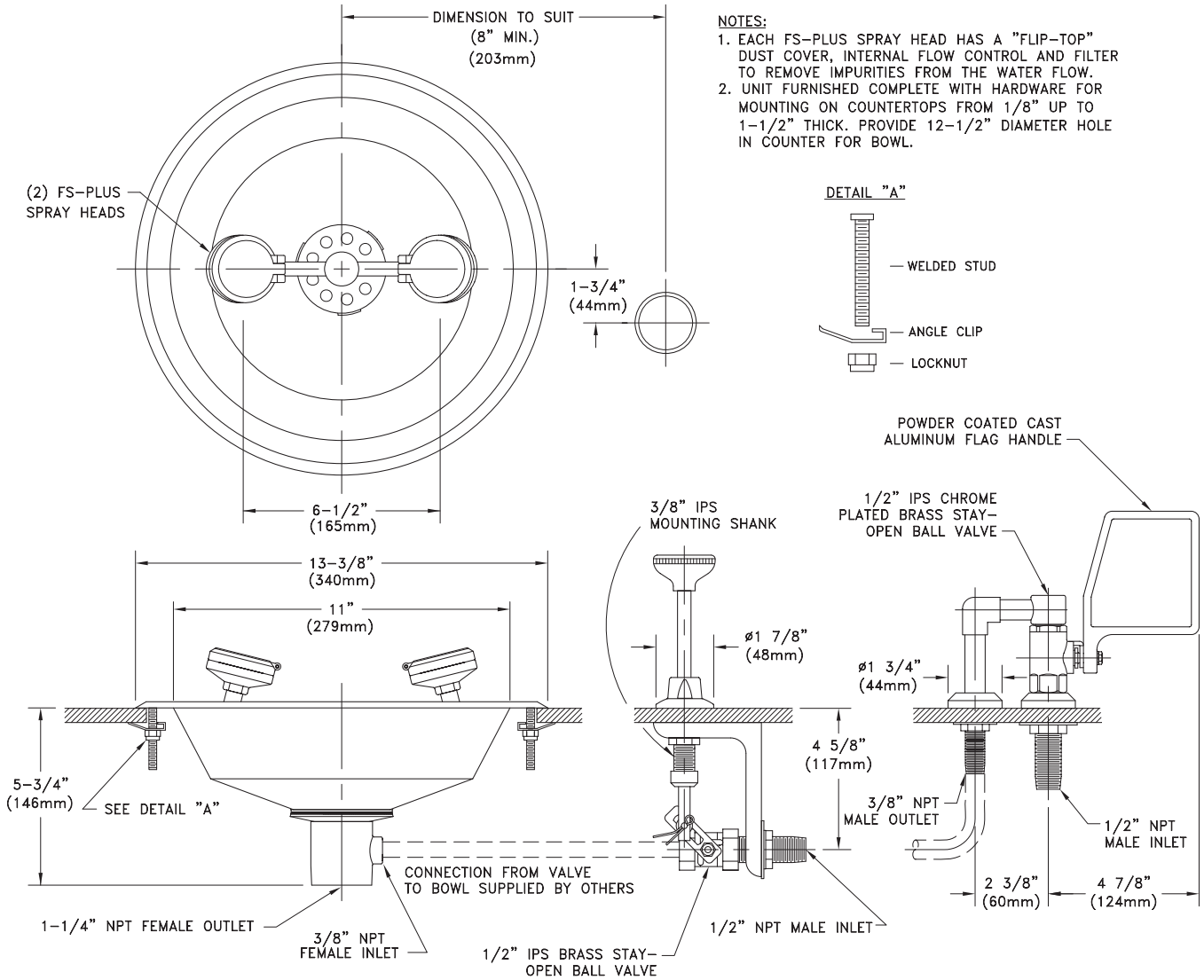
**QUALITY ASSURANCE:** Unit is completely assembled and water tested prior to shipment.

### Available Options

- DC** Stainless steel dust cover for each spray head.
- T** Chrome plated brass tailpiece and trap with 1 1/2" IPS waste connection.
- TP** 1 1/2" OD chrome plated brass tailpiece.
- TMV** G3600 thermostatic mixing valve precisely blends hot and cold water to deliver warm (tepid) water as required by ANSI Z358.1-2004. Refer to “Tempering Units” section for complete technical and product selection information.



- G1765** Eye/Face Wash, Recess Deck Mounted, Push-Down Valve
- G1766** Eye/Face Wash, Recess Deck Mounted, Ball Valve with Flag Handle



**G1765**  
Provide 3/4" diameter hole in countertop

**G1766**  
Provide 3/4" and 7/8" diameter holes in countertop

THIS SPACE FOR ARCHITECT/ENGINEER APPROVAL

Due to continuing product improvement, the information contained in this document is subject to change without notice. All dimensions are ± 1/4" (6mm). rev. 0308

Sign Included

