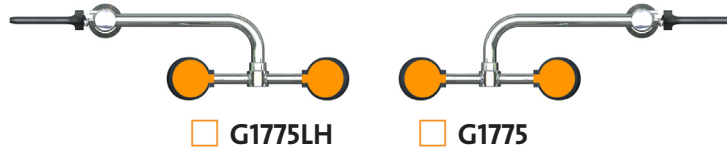




- G1775** Eye/Face Wash, Deck Mounted 90° Swivel, Right Hand Mounting
- G1775LH** Eye/Face Wash, Deck Mounted 90° Swivel, Left Hand Mounting



APPLICATION: Eye/face wash for mounting on counter next to sink. Spray heads swivel 90 degrees from storage to operational position. Water flow is activated by flag handle.

SPRAY HEAD ASSEMBLY: Two FS-Plus™ spray heads. Each head has a “flip top” dust cover, internal flow control and filter to remove impurities from the water flow.

VALVE: 1/2" IPS chrome plated brass stay-open ball valve. Valve is US-made with chrome plated brass ball and Teflon® seals.

MOUNTING: Unit may be mounted on right side (G1775) or left side (G1775LH) of sink. Furnished with locknut and washer for securing unit to countertop. Provide 7/8" diameter hole in counter.

CONSTRUCTION: Polished chrome plated brass.

SUPPLY: 1/2" NPT male inlet.

SIGN: ANSI-compliant identification sign.

QUALITY ASSURANCE: Unit is completely assembled and water tested prior to shipment.

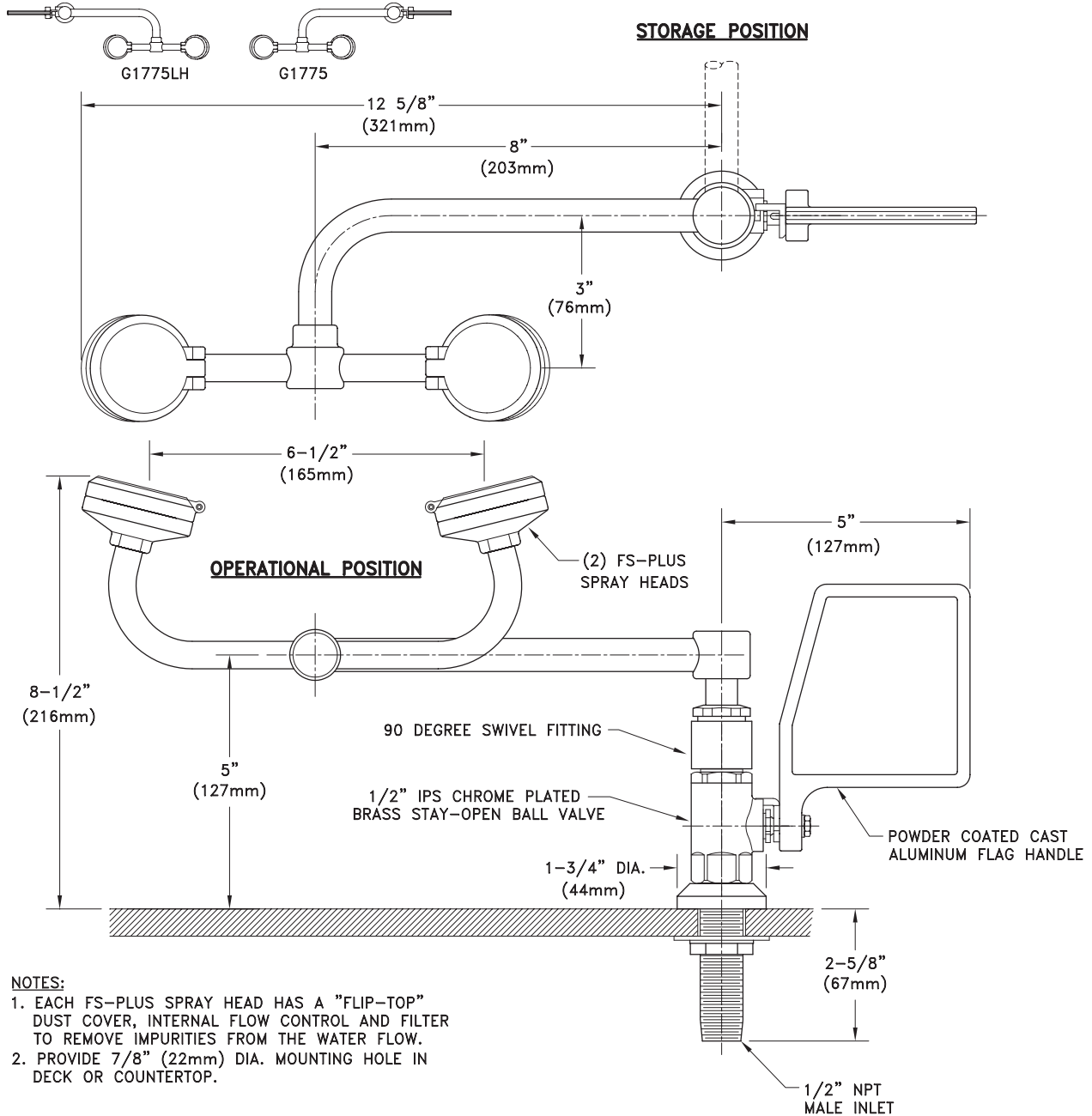
Available Options

- DC** Stainless steel dust cover for each spray head.
- TMV** G3600 thermostatic mixing valve precisely blends hot and cold water to deliver warm (tepid) water as required by ANSI Z358.1-2004. Refer to “Tempering Units” section for complete technical and product selection information.





- **G1775** Eye/Face Wash, Deck Mounted 90° Swivel, Right Hand Mounting
- **G1775LH** Eye/Face Wash, Deck Mounted 90° Swivel, Left Hand Mounting



NOTES:

1. EACH FS-PLUS SPRAY HEAD HAS A "FLIP-TOP" DUST COVER, INTERNAL FLOW CONTROL AND FILTER TO REMOVE IMPURITIES FROM THE WATER FLOW.
2. PROVIDE 7/8" (22mm) DIA. MOUNTING HOLE IN DECK OR COUNTERTOP.

THIS SPACE FOR ARCHITECT/ENGINEER APPROVAL

Due to continuing product improvement, the information contained in this document is subject to change without notice. All dimensions are ± 1/4" (6mm). rev. 0308

Sign Included

