



□ G1909PCC Safety Station with WideArea™ Eye/Face Wash, Polished Chrome Construction

APPLICATION: Combination WideArea™ eye/face wash and shower safety station. Unit is constructed of polished chrome plated brass pipe, fittings and components for attractive appearance and superior durability. Four GS-Plus™ spray-type outlet heads deliver a flood of water over a wide area of coverage for complete rinsing of eyes and face.

SHOWER HEAD: 8" diameter polished chrome plated cast brass.

SHOWER VALVE: 1" IPS chrome plated brass stay-open ball valve. Valve is US-made with chrome plated brass ball and Teflon® seals. Furnished with stainless steel actuating arm and 29" stainless steel pull rod.

SPRAY HEAD ASSEMBLY: Four GS-Plus™ spray heads. Each head has a "flip top" dust cover, internal flow control and filter to remove impurities from the water flow.

EYE/FACE WASH BOWL: 11 1/2" diameter stainless steel.

EYE/FACE WASH VALVE: 1/2" IPS chrome plated brass stay-open ball valve. Valve is US-made with chrome plated brass ball and Teflon® seals.

PIPE AND FITTINGS: Polished chrome plated brass.

SUPPLY: 1 1/4" NPT female top inlet.

WASTE: 1 1/4" NPT female outlet. Outlet can be positioned at either 8" or 20" above finished floor by reversing lower pipe nipples.

SIGN: Furnished with ANSI-compliant identification sign.

QUALITY ASSURANCE: Valve and spray head assemblies are factory assembled and water tested prior to shipment.

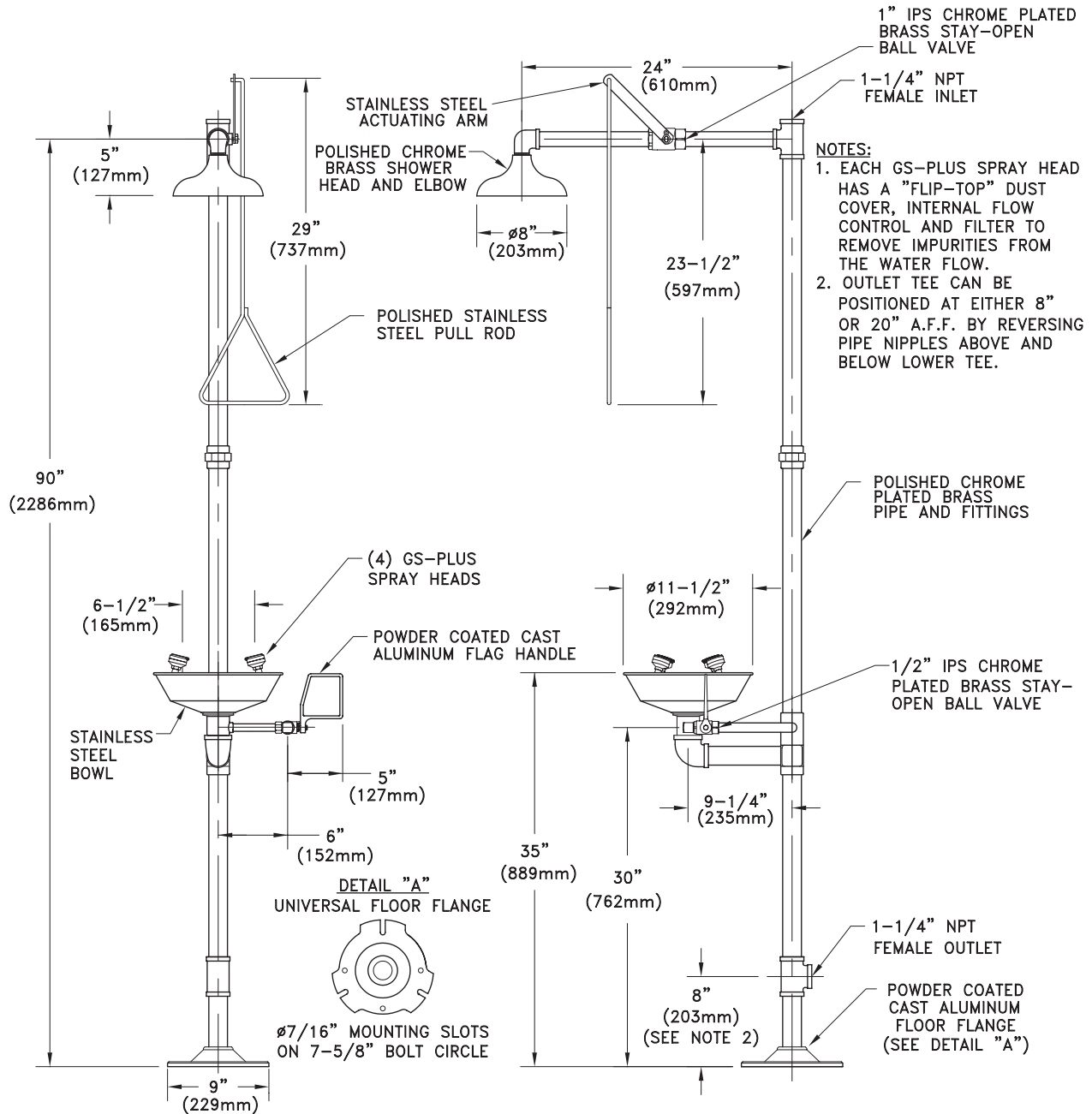
Available Options

- **FC20** Regulates shower flow rate to 20 GPM.
- **SSH** Stainless steel shower head.
- **AP275-100 ELECTRIC LIGHT AND ALARM HORN**
Light and alarm horn summon assistance when eye/face wash or shower is activated.
- **AP250-015 MODESTY CURTAIN**
Modesty curtain for mounting on safety station.
- **TMV** G3800 thermostatic mixing valve precisely blends hot and cold water to deliver warm (tepid) water as required by ANSI Z358.1-2004.





□ G1909PCC Safety Station with WideArea™ Eye/Face Wash, Polished Chrome Construction



THIS SPACE FOR ARCHITECT/ENGINEER APPROVAL

Due to continuing product improvement, the information contained in this document is subject to change without notice. All dimensions are ± 1/4" (6mm). rev. 0308

Sign Included

