



- GBF1735** Swing-Down Eye/Face Wash, Recessed Mounted
- GBF1736** Swing-Down Eye/Face Wash, Surface Mounted

APPLICATION: Wall mounted barrier-free swing-down eye/face wash. Eye/face wash is activated by swinging arms down to horizontal position. GBF1735 is furnished with stainless steel cabinet that is recess mounted in finished wall. GBF1736 is furnished with stainless steel cabinet that is surface mounted on wall.

ADA COMPLIANCE: When installed at recommended mounting height, unit complies with ADA requirements for accessibility by handicapped persons.

SPRAY HEAD ASSEMBLY: Two FS-Plus™ spray heads mounted on supply arms. Each spray head has internal flow control and filter to remove impurities from water.

VALVE: 1/2" IPS brass rotating plug-type valve. Valve is activated by swinging spray head assembly down from vertical to horizontal position. Valve remains open until head assembly is returned to vertical position. Furnished with in-line strainer to protect valve from debris and foreign matter.

MOUNTING: 16 gauge stainless steel cabinet. GBF1735 cabinet has flanged rim for recessed mounting in wall. Unit fits in standard 3 5/8" deep wall. GBF1736 cabinet is designed for mounting on wall surface.

SUPPLY: 1/2" IPS female inlet.

SIGN: ANSI-compliant identification sign.

QUALITY ASSURANCE: Unit is completely assembled and water tested prior to shipment.

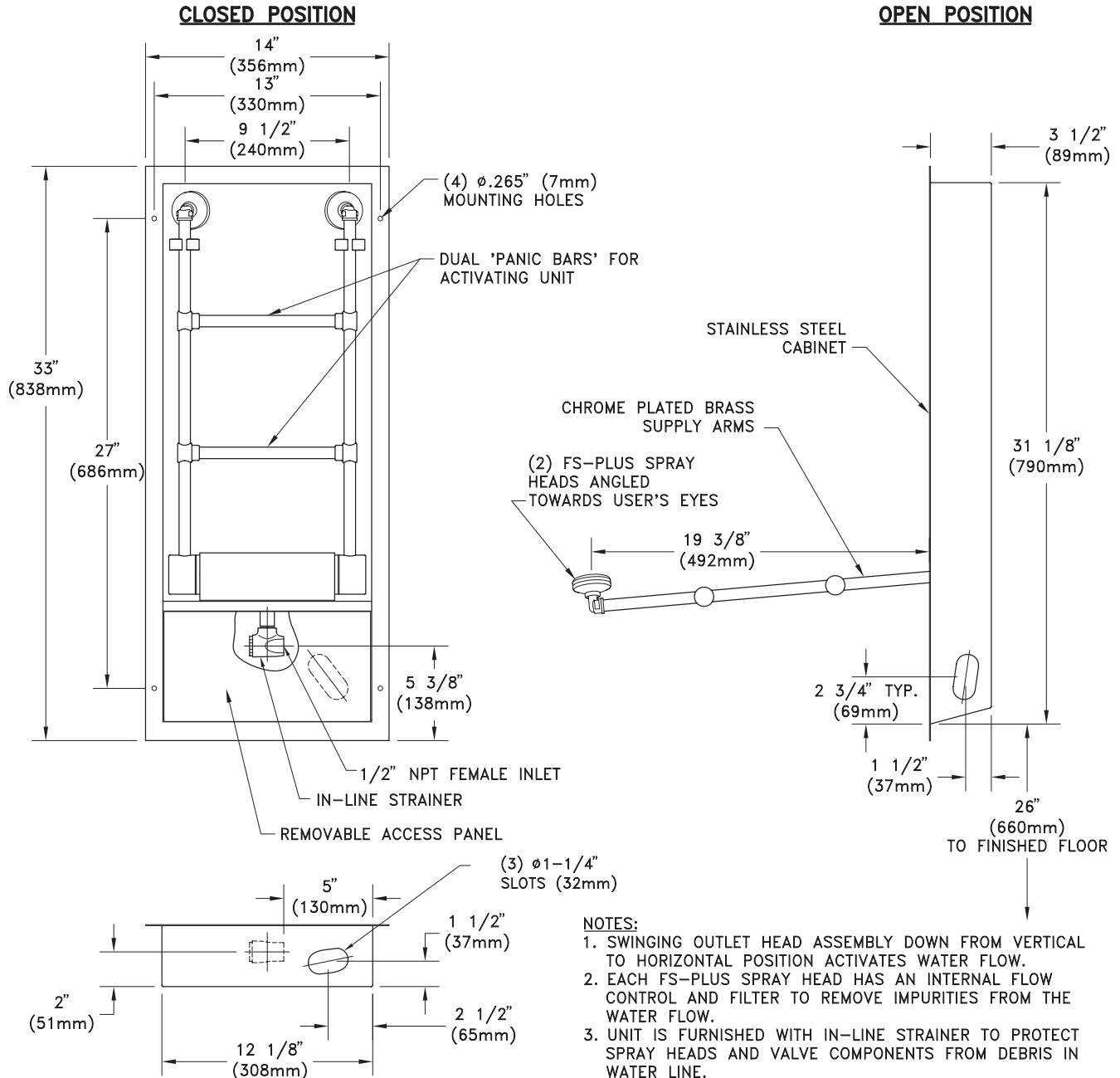
Available Options

- AP285-230 ELECTRIC LIGHT AND ALARM HORN**
Flashing light/alarm horn unit is recess mounted in finished wall. Light is illuminated and horn sounds when shower is activated.
- TMV G3600** thermostatic mixing valve precisely blends hot and cold water to deliver warm (tepid) water as required by ANSI Z358.1-2004.





- **GBF1735** Swing-Down Eye/Face Wash, Recessed Mounted
- **GBF1736** Swing-Down Eye/Face Wash, Surface Mounted



THIS SPACE FOR ARCHITECT/ENGINEER APPROVAL

Due to continuing product improvement, the information contained in this document is subject to change without notice. All dimensions are \pm 1/4" (6mm). rev. 0308

Sign Included

