



- GBF1735DP** Swing-Down Eye/Face Wash with Drain Pan, Recessed Mounted
- GBF1736DP** Swing-Down Eye/Face Wash with Drain Pan, Surface Mounted

**APPLICATION:** Wall mounted barrier-free swing-down eye/face wash with drain pan. Stainless steel cover provides attractive appearance and protects unit when not in use. When activated, cover serves as pan to collect waste water and return it into unit for drainage.

**ADA COMPLIANCE:** When installed at recommended mounting height, unit complies with ADA requirements for accessibility by handicapped persons.

**SPRAY HEAD ASSEMBLY:** Two FS-Plus™ spray heads mounted on supply arms. Each spray head has individually adjustable flow control and filter to remove impurities from water.

**COVER/DRAIN PAN:** 16 gauge stainless steel combination cover and drain pan. Grasping “panic bar” handle and opening cover pulls spray head assembly down from vertical to horizontal position, activating water flow. While unit is in operation, waste water is collected in drain pan and returned into cabinet for drainage. Unit remains in operation until cover is returned to closed position.

**VALVE:** 1/2" IPS brass rotating plug-type valve. Furnished with Teflon® coated O-ring seals and in-line strainer to protect valve and spray heads from debris and foreign matter.

**MOUNTING:** 16 gauge stainless steel cabinet. GBF1735DP cabinet has flanged rim for recessed mounting in wall. Unit fits in standard 3 5/8" deep wall. GBF1736DP cabinet is designed for mounting on wall surface.

**SUPPLY:** 1/2" IPS female inlet.

**WASTE:** 2" NPT female outlet.

**SIGN:** ANSI-compliant identification sign.

**QUALITY ASSURANCE:** Unit is completely assembled and water tested prior to shipment

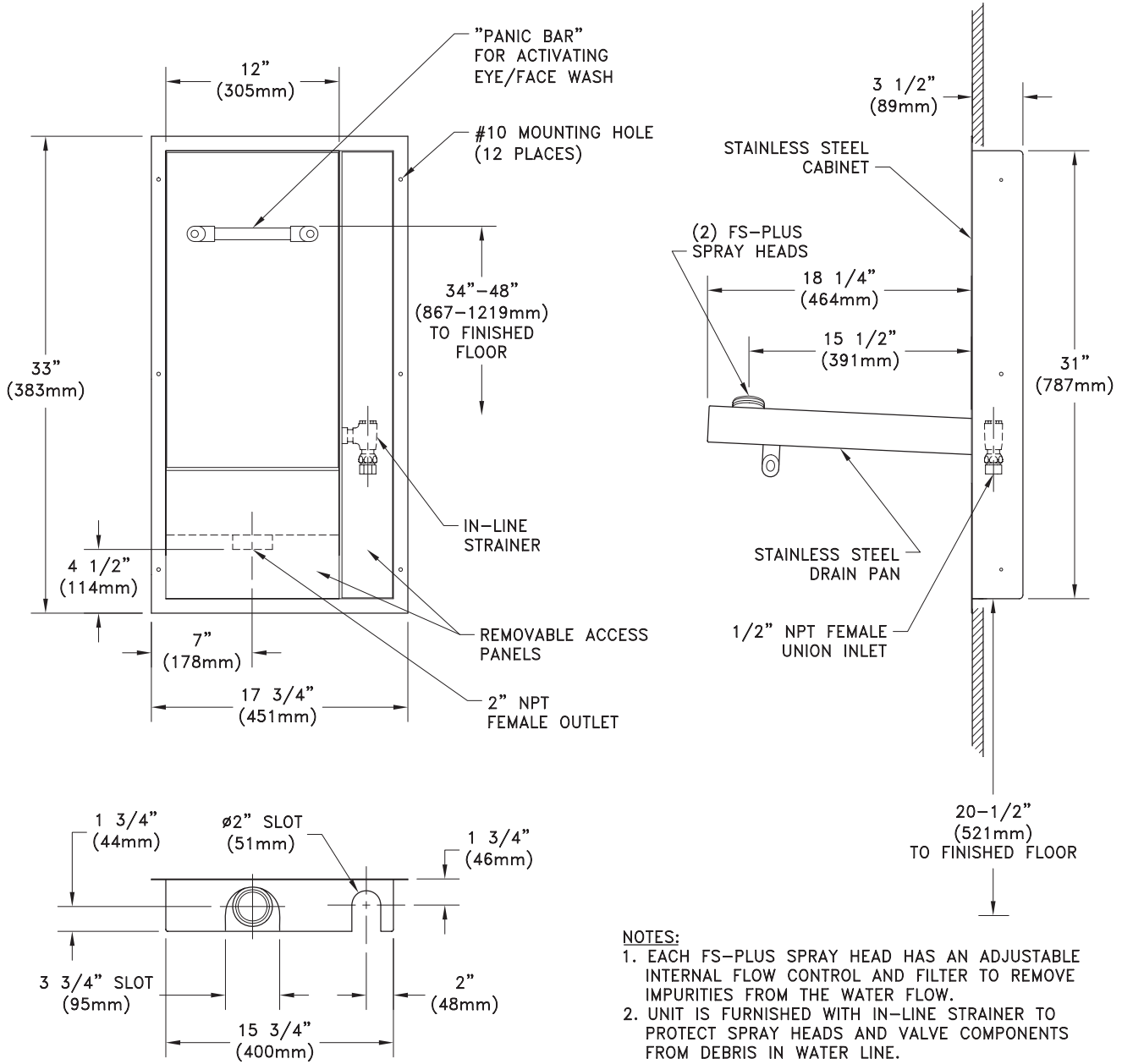
### Available Options

- AP280-230 ELECTRIC LIGHT AND ALARM HORN**  
Flashing light/alarm horn unit is recess mounted in finished wall. Light is illuminated and horn sounds when shower is activated.
- TMV G3600** thermostatic mixing valve precisely blends hot and cold water to deliver warm (tepid) water as required by ANSI Z358.1-2004.





- **GBF1735DP** Swing-Down Eye/Face Wash with Drain Pan, Recessed Mounted
- **GBF1736DP** Swing-Down Eye/Face Wash with Drain Pan, Surface Mounted



- NOTES:**
1. EACH FS-PLUS SPRAY HEAD HAS AN ADJUSTABLE INTERNAL FLOW CONTROL AND FILTER TO REMOVE IMPURITIES FROM THE WATER FLOW.
  2. UNIT IS FURNISHED WITH IN-LINE STRAINER TO PROTECT SPRAY HEADS AND VALVE COMPONENTS FROM DEBRIS IN WATER LINE.
  3. INLET CAN BE POSITIONED TO SUPPLY UNIT FROM TOP OR BOTTOM.

THIS SPACE FOR ARCHITECT/ENGINEER APPROVAL

Due to continuing product improvement, the information contained in this document is subject to change without notice. All dimensions are ± 1/4" (6mm). rev. 0308

Sign Included

