



- GBF2152** Recessed Safety Station with Drain Pan and Daylight Drain, Stainless Steel Shower Head
- GBF2152PCC** Recessed Safety Station with Drain Pan and Daylight Drain, Chrome Shower Head

APPLICATION: Recessed barrier-free eye/face wash and shower safety station with ceiling mounted exposed shower head and drain pan. Stainless steel cover provides attractive appearance and protects unit when not in use. When activated, cover serves as pan to collect waste water and return it into unit for drainage. Rather than connecting to building drainage system, unit has 1 1/2" OD drain connection on front of unit for waste water. Front drain provides for less costly installation while facilitating regular testing of unit.

ADA COMPLIANCE: When installed at recommended mounting heights, unit complies with ADA requirements for accessibility by handicapped persons.

SHOWER HEAD: 10" diameter stainless steel (GBF2152) or 8" diameter chrome plated cast brass (GBF2152PCC).

SHOWER VALVE: 1" IPS brass stay-open ball valve with stainless steel "panic bar" actuator.

COVER/DRAIN PAN: 16 gauge stainless steel combination cover and drain pan. Grasping "panic bar" handle and opening cover pulls spray head assembly down from vertical to horizontal position, activating water flow. While unit is in operation, waste water is collected in drain pan and returned into cabinet for drainage. Unit remains in operation until cover is returned to closed position.

EYE/FACE WASH SPRAY HEAD ASSEMBLY: Two FS-Plus™ spray heads mounted on supply arms. Each spray head has individually adjustable flow control and filter to remove impurities from water.

EYE/FACE WASH VALVE: 1/2" IPS brass rotating plug-type valve. Furnished with Teflon® coated O-ring seals and in-line strainer to protect valve from debris and foreign matter.

MOUNTING: 16 gauge stainless steel cabinet with flanged rim for recessed mounting in wall. Unit fits in standard 3 5/8" deep wall.

PIPE AND FITTINGS: Exposed pipe and escutcheon are brushed stainless steel (GBF2152) or polished chrome plated brass (GBF2152PCC).

SUPPLY: 1" NPT female inlet.

WASTE: 1 1/2" OD tailpiece with stainless steel cover.

SIGN: Furnished with ANSI-compliant identification sign.

QUALITY ASSURANCE: Unit is completely assembled and water tested prior to shipment.

U.S. PATENT 5,768,721

Available Options

- AP250-065 MODESTY CURTAIN**
- AP280-230 ELECTRIC LIGHT AND ALARM HORN**
- TMV** G3800 thermostatic mixing valve.

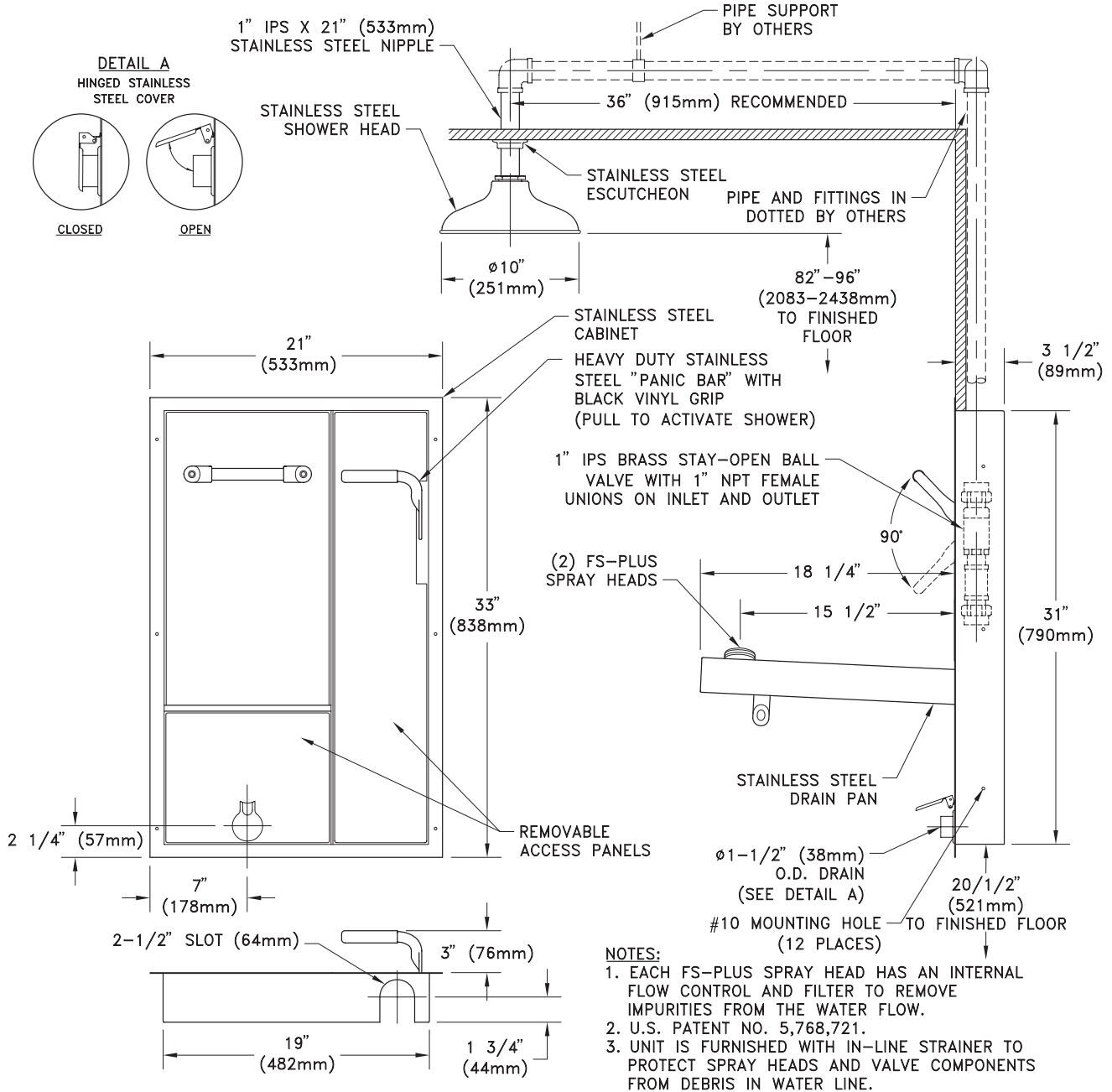


Note: Shown with optional AP280-230 electric light and alarm horn unit (sold separately).





- **GBF2152** Recessed Safety Station with Drain Pan and Daylight Drain, Stainless Steel Shower Head
- **GBF2152PCC** Recessed Safety Station with Drain Pan and Daylight Drain, Chrome Shower Head



THIS SPACE FOR ARCHITECT/ENGINEER APPROVAL

Due to continuing product improvement, the information contained in this document is subject to change without notice. All dimensions are ± 1/4" (6mm). rev. 0308

Sign Included

